

Founded April 2012:

Formed through the amalgamation of Jeanne Sauvé Family Services, Child and Family Services of Timmins and District and Timiskaming Child and Family Services.



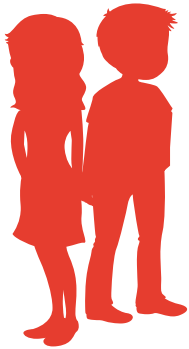
Service Area:

Districts: of Cochrane and Timiskaming
Geographic Area: 154,550 square kilometers
Population: 113,756 (2011 Census)
Population Density: 0.7 persons per square kilometer



Demographics:

Language: 38% Francophone (Provincial average 4%)
First Nations: 10% (Provincial average 2%)



COMMUNITY-BASED SERVICES Ontario Early Years Centre & Brighter Futures

Number of parents/caregivers served: 1,556
Number of parent/caregiver visits: 10,525



Number of children served: 1,791
Number of child visits: 14,869



YOUTH JUSTICE Number of clients served by program.

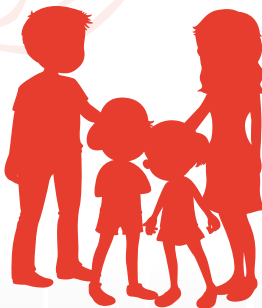
Attendance Centres: 137
Restorative Justice: 47
Anger Management: 14
Pineger Youth Centre: 57
Community Support Team: 86



Number of hours of direct service: 3,503.5

Supervised Access Program

499 visits and exchanges arranged.



Number of hours of direct service:

Restorative Justice: 132.5
Anger Management: 336.75
Pineger Youth Centre: 2,247
Community Support Team: 1,117





CHILD WELFARE Investigations

1,675 Reports received, full investigation not required
148 Investigations open at beginning of year

Number of investigation cases:

- opened during the year 1022
- re-opened during the year 424
- served during the year 1594

1,417 investigations completed



Ongoing Service

589 Ongoing service cases open at beginning of the year
560 Ongoing service cases opened during the year

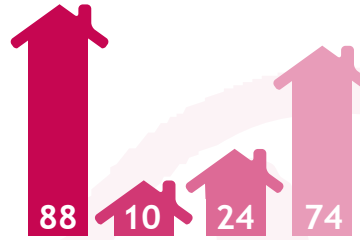
Number of ongoing service cases:

- closed during the year 534
- open at year end 615



Children in Care

252 Children in care beginning the year
213 Children in care admitted/readmitted during the year
196 Children in care discharged during the year
269 Children in care at year end



FOSTER CARE

88 Foster homes available at beginning of year
10 New approved foster homes during year
24 Foster homes closed during year
74 Foster homes available at year end



Kinship Care

7 Kinship care homes available at beginning of year
10 New approved kinship care homes during year
6 Kinship care homes closed during year
11 Kinship care homes available at year end

Adoption

9 adoptions completed



Cochrane

451 Chalmers Avenue,
P.O. Box 1450
Cochrane, ON P0L 1C0
☎ 705-272-2449
☎ 705-272-3491

Kirkland Lake

6 Tweedsmuir Road
Kirkland Lake, ON P2N 1H9
☎ 705-567-9201
☎ 705-568-8787

Englehart

40 Third Street, P.O. Box 607
Englehart, ON P0J 1H0
☎ 705-544-5437
☎ 705-544-2555

New Liskeard

25 Paget Street, P.O. Box 68
New Liskeard, ON P0J 1P0
☎ 705-647-1200
☎ 705-647-7467

Hearst

909, rue George, C.P. 1630
Hearst, ON P0L 1N0
☎ 705-372-2445
☎ 705-362-7687

Smooth Rock Falls

105 2nd Avenue, P.O. Box 808
Smooth Rock Falls, ON P0L 2B0
☎ 705-338-2366
☎ 705-338-4511

Iroquois Falls

457 Zealand Avenue
Iroquois Falls, ON P0K 1G0
☎ 705-232-7000
☎ 705-232-6089

Timmins

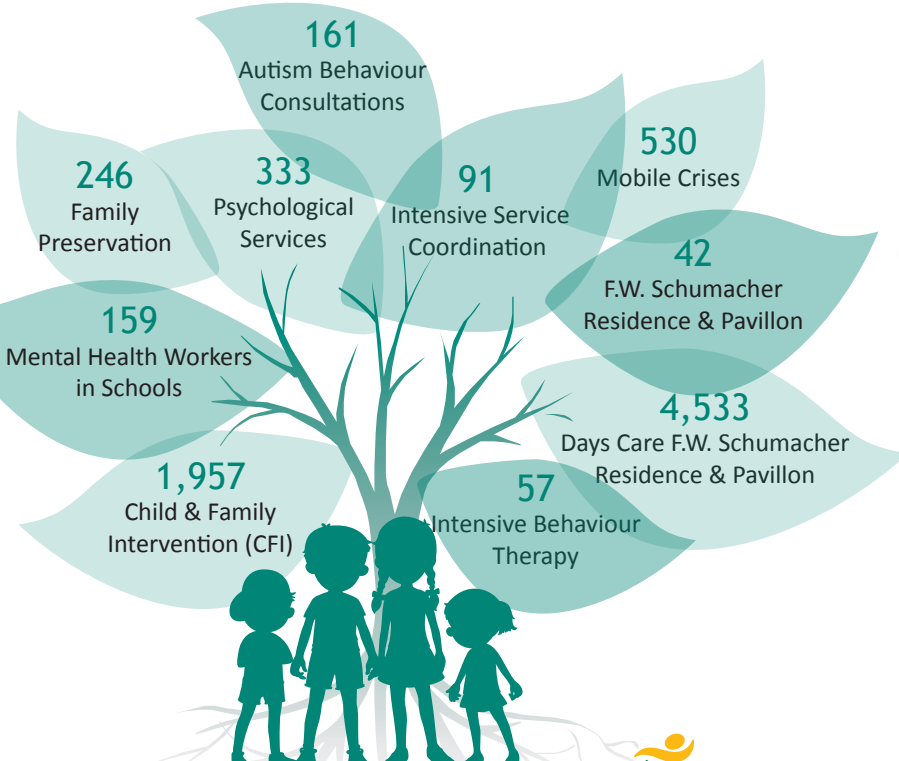
707 Ross Avenue East
Timmins, ON P4N 8R1
☎ 705-360-7100
☎ 705-360-7200

Kapuskasing

29 Kolb Avenue
Kapuskasing, ON P5N 1G2
☎ 705-335-2445
☎ 705-335-4391

Timmins Wilcox

457 Wilcox Street
Timmins, ON P4N 3M1
☎ 705-360-7100
☎ 705-360-7200



CHILDREN'S MENTAL HEALTH Number of clients served by program.



North Eastern Ontario
Family and Children's Services
Services à la famille et à l'enfance
du Nord-Est de l'Ontario